

FEEL WARMTH.

TASTE ATMOSPHERE.

ENJOY QUALITY.

Altech



ECOSY

SOAPSTONE STOVE
PELLET

INSTRUCTION MANUAL



ECOSY PELLETT SERIE



Ecosy Pellet



Ecosy Pellet Plus



INDEX

INSTALLATION AND PLACEMENT

MANUAL FIRING

FUELS

MAINTENANCE

MALFUNCTIONS AND PROBLEMS

WARRANTY TERMS

ECOSY PELLETT

Your Altech stove must be installed to be according to the local applicable (legal) regulations and building decrees including all national and European applicable requirements. Your Altech dealer can advise you on this.

CHIMNEY

The pellet stove can be connected to a channel of 150mm, of course this must comply with local regulations and building decrees. Other sizes are possible in consult with your supplier. In case of a chimney fire; close the air valve of the stove, put out the fire in the stove with sand or soda and alert the fire brigade, never try to put out the fire yourself with water.

CONNECTOR

The connection between the stove and the chimney must be properly sealed without the flue gases or the sweeping of the to obstruct the chimney.

AIR SUPPLY

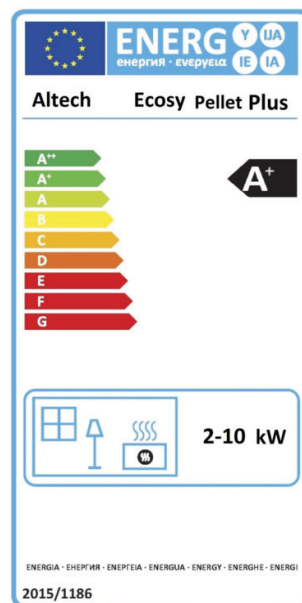
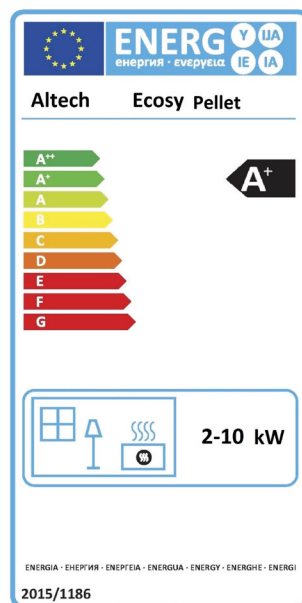
In the room where the stove is placed there must be sufficient fresh air supplied for the combustion process in the stove. In well-insulated homes or homes equipped with mechanical ventilation an opening must be made to the outside air through which the air supply is guaranteed.

SUBSTRATE

Place the heater on a sufficiently firm and stable surface. The material of the floor must be non-combustible. The floor material must be non-combustible. If you place the stove on a steel or glass floor plate, the floor underneath must be non-combustible.

CHECK INDIVIDUAL PARTS

Before using for the first time, check that all individual parts in the stove are in the correct position and that the stove is not damaged.



TACHNICAL DATA ECOSY PELLETT	Small (4 kg)	Plus (4 kg)
Height (cm)	99	129
Width (cm)	61	61
Depth (cm)	42	42
Weight (kg)	260	360
Rated Power (kW)	2-10	2-10
Connection	On top	On top
Diameter flue gas outlet (cm)	150	150
Efficiency (%)	94,1	94,1

DISTANCE TO WALLS, FURNITURE AND OTHER MATERIAL ECOSY PELLETT	FLAMMABLE	NON-FLAMMABLE
Backside (cm)	35	10
Side (cm)	50	10
Front (cm)	100	100

FIRST USE

Every Altech soapstone pellet stove is delivered handmade with great care. Keep in mind that you can only heat the pellet stove once a day during the first week.

Scale; residual moisture in the soapstone can cause more soot to develop in the combustion chamber during the first firings. This will decrease after a number of heating cycles.



MANUAL FIRING

The stove is only suitable for burning wood pellets. For further explanation, see the chapter "fuels". We advise to use a firelighter or a specially made lighting gel for lighting.

1. You clean the pellet burner using the brush supplied.



2. You open the door and fill the burner from above with wood pellets.



3. You place a little bit of lighting gel or a lighting block on top of the pellets, then you light it.



4. You close the door and enjoy a beautiful play of flames.



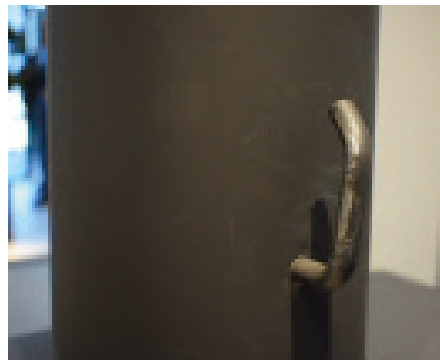
REFILL

It is not possible to refill the stove while the pellets are burning. You must wait at least 20 minutes after the flames are completely extinguished, before refilling the burner. To refill the grid always sweep once with the brush supplied.



FIRING AT A HIGHER OUTSIDE TEMPERATURE

At higher outside temperatures, it can come to a disturbance of the chimney draft which as a result, smoke will escape from the stove. This can be prevented by using the heater firing with a greater flame development. A greater flame development with an equal power is obtained with a further open chimney valve.



FUELS

The Altech pellet stoves are only suitable for heating with high quality wood pellets, that means;

- A high combustion value (above 5kWh/kg)
- A low ash value (between 0,2%-0,5%)
- A low moisture value (between 7%-8%)



MAINTENANCE



Ash

The ash pan should be emptied regularly. Please note that the ash may still contain glowing particles even after 24 hours. Empty the ash pan into a steel waste container in which there are no flammable objects.



Cleaning

The stove may only be cleaned when it is cold. Wipe the outside of the heater with a soft cloth or soft brush. Under no circumstances use water or aggressive cleaning agents. It is best to remove any (grease) stains on the stones with benzene. When doing so, make sure that no benzene gets on the painted surfaces.



Floor tiles

Soapstone is a natural product. It is possible that hairline cracks appear in the stone. This does not affect the operation of the stove.



Window

If, despite the window cleaning, deposits have formed on the window, it is best to remove this with special window cleaner.



Doors and Seals

Check regularly whether the seals of the doors (including the ash pan) are still intact and flexible. If not, they will have to be replaced. Only use original parts for this.



Chimney

Although this may not be necessary due to the clean combustion, the chimney should still be swept and cleaned annually. Let this work only be carried out by an authorized chimney sweep.

MALFUNCTIONS & PROBLEMS

Window Turns black

- The wood pellets are too moist, only burn pellets with a humidity level between 7% and 8%.
- The front door seal is faulty.
- The valve in the chimney flue is closed too far.

Stove does not come up to temperature or burns badly

- Air supply is closed too far.
- Chimney draft too low (eg due to weather conditions like fog or a dirty chimney).
- Wood pellets that are too moist.

Irregular or excessive combustion

- The chimney draft is too great, close the chimney damper a little bit further.
- Door seals are defective or worn.
- The chimney draft is too low or irregular (eg due to weather conditions such as gusts of wind and fog, polluted chimney)

Smoke in the room

- Insufficient chimney draft (e.g. due to weather conditions such as fog, dirty chimney).
- Chimney valve is not in open position.
- Air valve is closed.

WARRANTY CONDITIONS

ECOSY PELLETT

The Altech warranty only applies to brand new stoves for a period of five years from the date of purchase. In the first and second year, both the material and labor costs are reimbursed. The third, fourth and fifth year only the material costs. Warranty claims can only be made through an authorized Altech dealer or Altech distributor.

If the warranty certificate has not been sent to Altech within 14 days of purchase, you can only claim the legally established warranty provisions that apply in the country of sale.

Warranties are not transferable.

The warranty will become void if work is carried out on the heater by dealers or distributors other than those authorized by Altech and/or if non-original parts are used.

Warranty card

For warranty it is necessary to return your heater within 14 days to register. You can do this on our website. See link below.
<https://www.altechkachels.com/registreer-uw-altech-kachel/>

Not covered by the warranty:

Hairline cracks which may appear in the outer stone will have no effect on the operation of the stove. These stones will not need to be replaced.

All parts subject to wear such as cord and gaskets, glass panes, heating grid and inner cladding. Transport costs, assembly and disassembly costs. Damage due to incorrect use, insufficient maintenance or modifications to the stove. Damage caused by incorrect installation. Fees for any consequential damage.

Before using the stove, it is assumed that the user is aware of the operating instructions and the warranty conditions. Insufficient maintenance will void the warranty.



Altech